



NEWS RELEASE

SILVER TIGER INTERSECTS MULTI-KILOGRAM SILVER MINERALIZATION IN DRILL HOLES 219 AND 217 LOCATED 250 AND 1,025 METERS SOUTH OF DISCOVERY HOLE 202

HALIFAX, NOVA SCOTIA – April 20, 2021 – Silver Tiger Metals Inc. (TSXV:SLVR and OTCQX:SLVTF) ("Silver Tiger" or the "Corporation") has intersected **0.5 meters grading 4,668.5 g/t silver equivalent within 11.8 meters grading 325.0 g/t silver equivalent** in the Sooy in Drill Hole ET-21-219. This hole was drilled on Section 4650N to test the Sooy Vein 250 meters to the south along strike from Discovery Hole ET-20-202 (see Silver Tiger press release dated February 2, 2021). Also, drill hole ET-21-217, located 1,025 meters to the south of Discovery Hole ET-20-202, **intersected 0.5 meters grading 2,693.6 g/t silver equivalent within 7.3 meters grading 221.2 g/t silver equivalent**. See attached Plan Map.

Highlights from recent drilling of the Sooy Vein include the following:

- Hole ET 21-219: **0.5 meters grading 4,668.5 g/t silver equivalent** from 190.3 meters to 190.8 meters, consisting of 4,375.0 g/t silver, 0.49 g/t gold, 0.88% copper, 2.0% lead and 3.57% zinc **within 11.8 meters grading 325.0 g/t silver equivalent** from 179.0 meters to 190.8 meters, consisting of 288.3 g/t silver, 0.29 g/t gold, 0.05% copper, 0.11% lead and 0.20% zinc.
- Hole ET-21-217: **0.5 meters grading 2,693.6 g/t silver equivalent** from 109.0 meters to 109.5 meters consisting of 2,595.0 g/t silver, 0.66 g/t gold, 0.41% copper, 0.26% lead and 0.05% zinc **within 7.3 meters grading 221.2 g/t silver equivalent** from 103.7 meters to 111.0 meters, consisting of 210.5 g/t silver, 0.08 g/t gold, 0.04% copper, 0.03% lead and 0.01% zinc
- Hole ET 21-215: **1.1 meters grading 1,110.6 g/t silver equivalent** from 226.5 meters to 229.6 meters (excluding a 2 meter void), consisting of 960.9 g/t silver, 0.39 g/t gold, 0.78% copper and 1.79% lead **within 10.1 meters grading 210.6 g/t silver equivalent** consisting of 167.3 g/t silver, 0.26 g/t gold, 0.15% copper and 0.36% lead.
- Hole ET-21-216: **0.6 meters grading 1,720.7 g/t silver equivalent** from 214.5 meters to 215.0 meters, consisting of 1,608.0 g/t silver, 0.24 g/t gold, 0.19% copper, 0.32% lead and 2.01% zinc **within 3.5 meters grading 260.5 g/t silver equivalent** from 214.5 meters to 218.0 meters, consisting of 239.2 g/t silver, 0.08 g/t Au, 0.03% copper, 0.06% lead and 0.32% zinc.

Additional results are presented in the Drill Hole Results table along with the details for the calculation of the silver equivalent grades.

See attached El Tigre Cross Sections 4650N, 4750N and 3875N. A Plan Map of Five Kilometers of the El Tigre Veins and Drill Holes is also attached.

Silver Tiger's CEO, Glenn Jessome, stated, "Step out drilling to the south on the Sooy Vein continues to deliver consistent high grade silver results. Drill hole 219 is located 250 meters south of Discovery Hole 202, which was press released in February 2021, and drill hole 217 is located a further 775 meters to the south of hole 219." Mr. Jessome further commented, "These recent drill intercepts coupled with the recently

announced high grade silver drill intercepts in the Benjamin Vein, 1.2 kilometers to the north of Discovery Hole 202, provide multiple pierce points over 2.2 kilometers on the Sooy Vein. We now believe the Benjamin Vein is the northern extension of the prolific Sooy Vein.”

As previously reported, Discovery Drill Hole ET-20-202 intersected 11.75 meters grading 667.9 g/t silver equivalent within 22.2 meters grading 381.9 g/t silver equivalent approximately 12 meters beyond the footwall of the Sooy Vein. Drill Hole 202 was drilled to test the down dip potential of the Sooy Vein targeting just under the lowest mine level approximately 150 meters from surface where mining ceased abruptly with the onset of the Great Depression in 1930. Drill Hole 202 passed through mine workings on the Sooy Vein as it was not targeted deep enough below the workings. The technical team opted to continue drilling beyond the footwall of the Sooy Vein and discovered a new style of wide high grade mineralization in the Flat Formation that is not the traditional quartz vein ore that had been previously mined at El Tigre (refer to Silver Tiger press release dated February 2, 2021).

The discovery of the Benjamin Vein was press released on January 21, 2021 with drill hole ET-20-193 intersecting 3.0 meters of 1,310.1 g/t silver equivalent. Drill hole ET-20-193 is located approximately 900 meters north of the historic El Tigre mine workings. Additional high grade silver intercepts in the area between the northern extent of the old El Tigre Mine and drill hole ET-20-193 were reported in the press release dated April 6, 2021.

Drill Hole Results Table

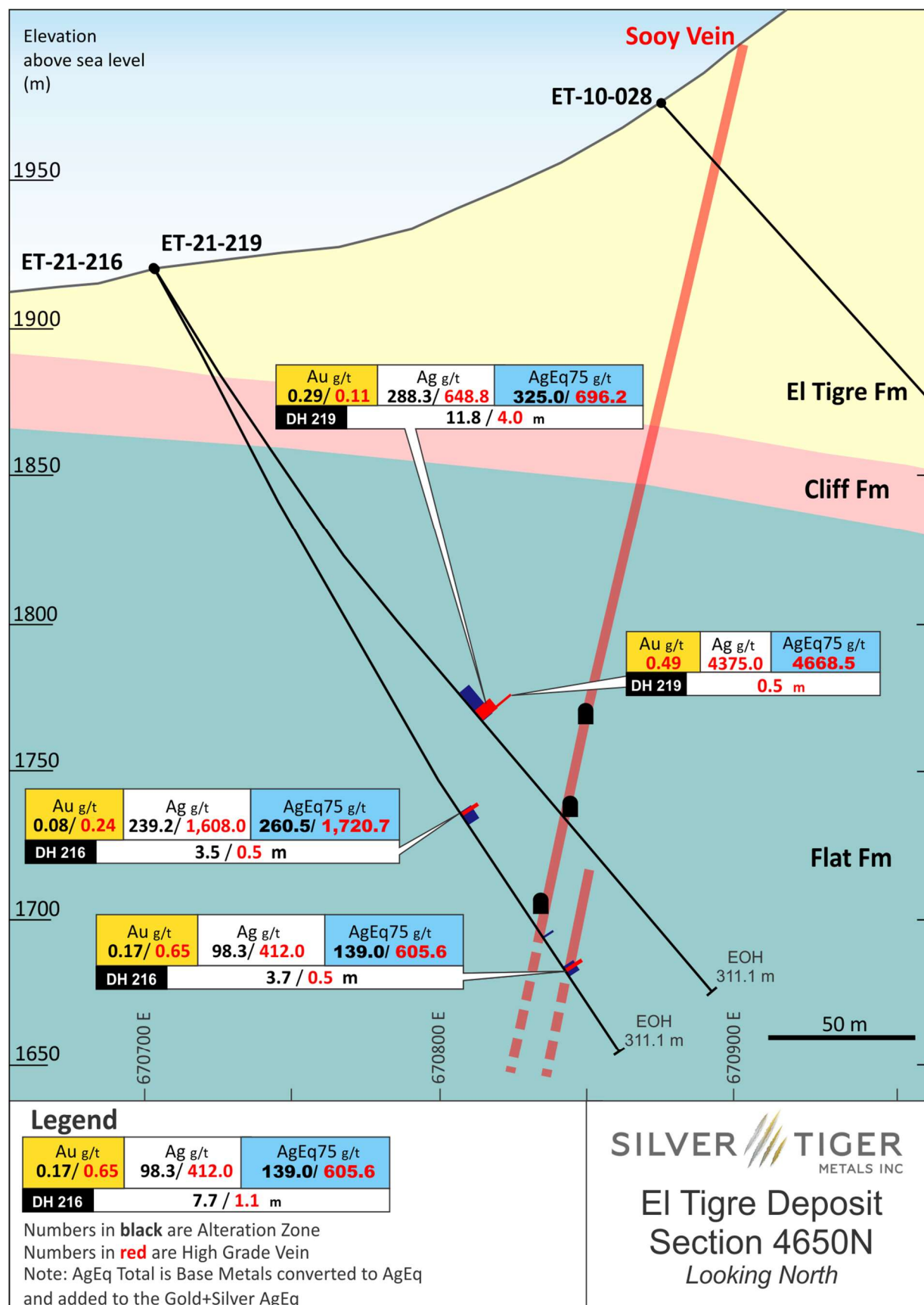
Hole ID	Comment	From m	To m	Length ⁽¹⁾ m	Gold g/t	Silver g/t	Copper %	Lead %	Zinc %	AgEq Total g/t
ET-21-214	Sooy Vein	303.1	314.2	8.4	0.15	14.7	0.01	0.12	0.08	32.0
	and	334.7	335.3	0.6	0.08	279.0	0.09	0.38	0.16	307.8
ET-21-215	Sooy Vein ⁽³⁾	224.5	236.6	10.1	0.26	167.3	0.15	0.36	0.00	210.6
	including ⁽³⁾	226.5	229.6	1.1 ⁽³⁾	0.39	960.9	0.78	1.79	0.00	1,110.6
ET-21-216	Sooy Vein	214.5	218.0	3.5	0.08	239.2	0.03	0.06	0.32	260.5
	including	214.5	215.0	0.5	0.24	1,608.0	0.19	0.32	2.01	1,720.7
	and	276.8	280.5	3.7	0.17	98.3	0.06	0.14	0.55	139.0
	including	279.0	279.5	0.5	0.65	412.0	0.27	0.81	2.93	605.6
ET-21-217	Sooy Vein	103.7	111.0	7.3	0.08	210.5	0.04	0.03	0.01	221.2
	including	108.9	109.5	0.5	0.66	2,595.0	0.41	0.26	0.05	2,693.6
ET-21-218	Results pending									
ET-21-219	Sooy Vein	179.0	190.8	11.8	0.29	288.3	0.05	0.11	0.20	325.0
	including	186.9	190.8	4.0	0.11	648.8	0.14	0.28	0.55	696.2
	including	190.3	190.8	0.5	0.49	4,375.0	0.88	2.00	3.57	4,668.5

- Notes:
1. Not true width.
 2. Silver Equivalent (“EqAg”) ratios are based on a silver to gold price ratio of 75:1 (Au:Ag). Copper, lead and zinc are converted using \$3.66/lb copper, \$0.90/lb lead, \$1.26/lb zinc at 100% metal recoveries based on a silver price of \$26.00/oz.
 3. Excludes a 2.0 meter void.

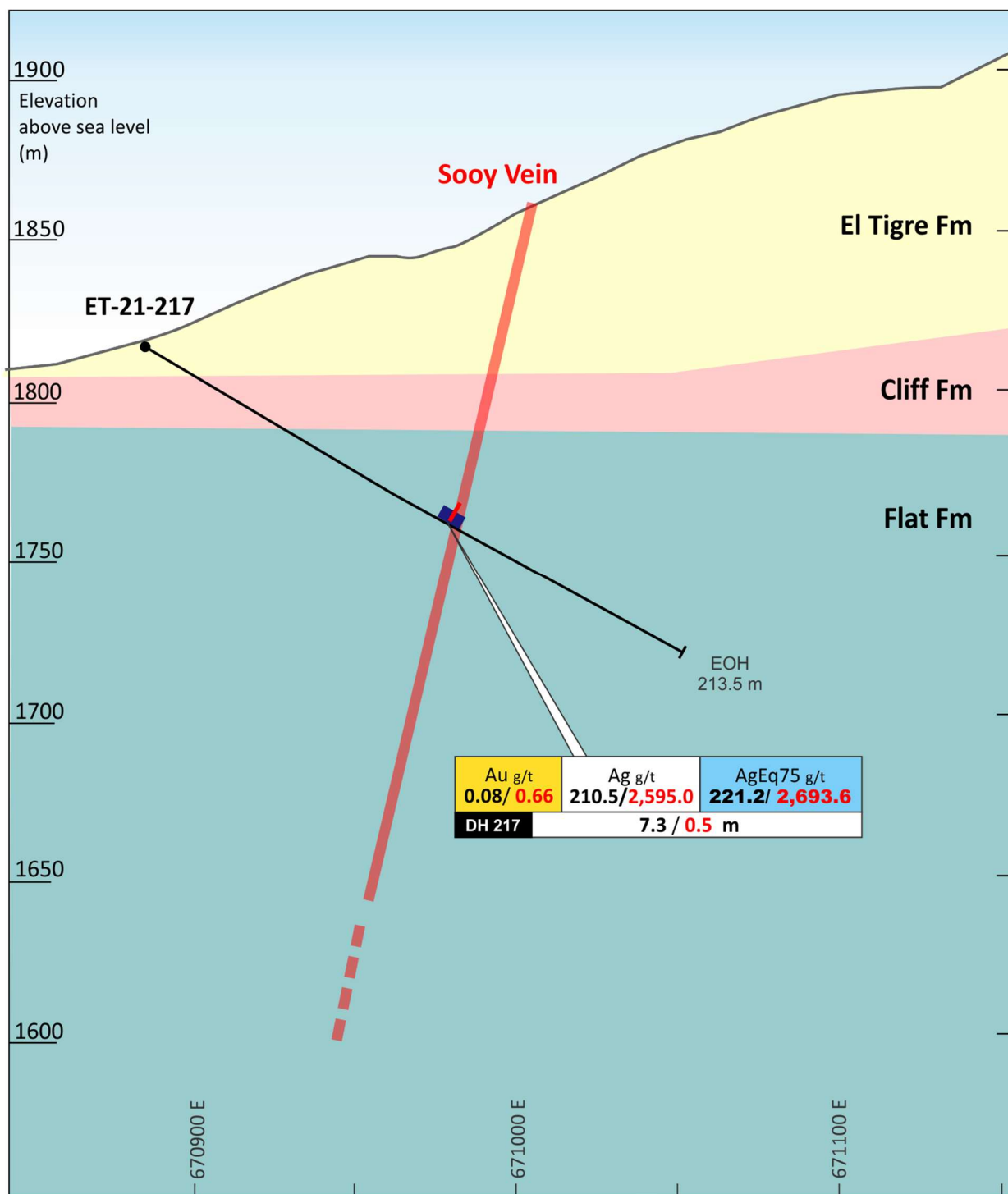
Drill Hole Location Table

Hole ID	Section	Easting	Northing	Elevation	Az	Dip	Length
ET-21-214	3875	670889	3383877	1823	49	-30	378.2
ET-21-215	4750	670726	3384750	1905	90	-68	252.5
ET-21-216	4650	670703	3384651	1922	94	-61	311.1
ET-21-217	3825	670883	3383820	1818	61	-30	213.5
ET-21-218	3550	670774	3383556	1802	66	-30	454.5
ET-21-219	4650	670703	3384651	1922	90	-57	311.1

El Tigre Cross Section 4650N



El Tigre Cross Section 3875N



Legend

Au g/t	Ag g/t	AgEq75 g/t
0.08 / 0.66	210.5 / 2,595.0	221.2 / 2,693.6
DH 217		
7.3 / 0.5 m		

Numbers in **black** are Alteration Zone

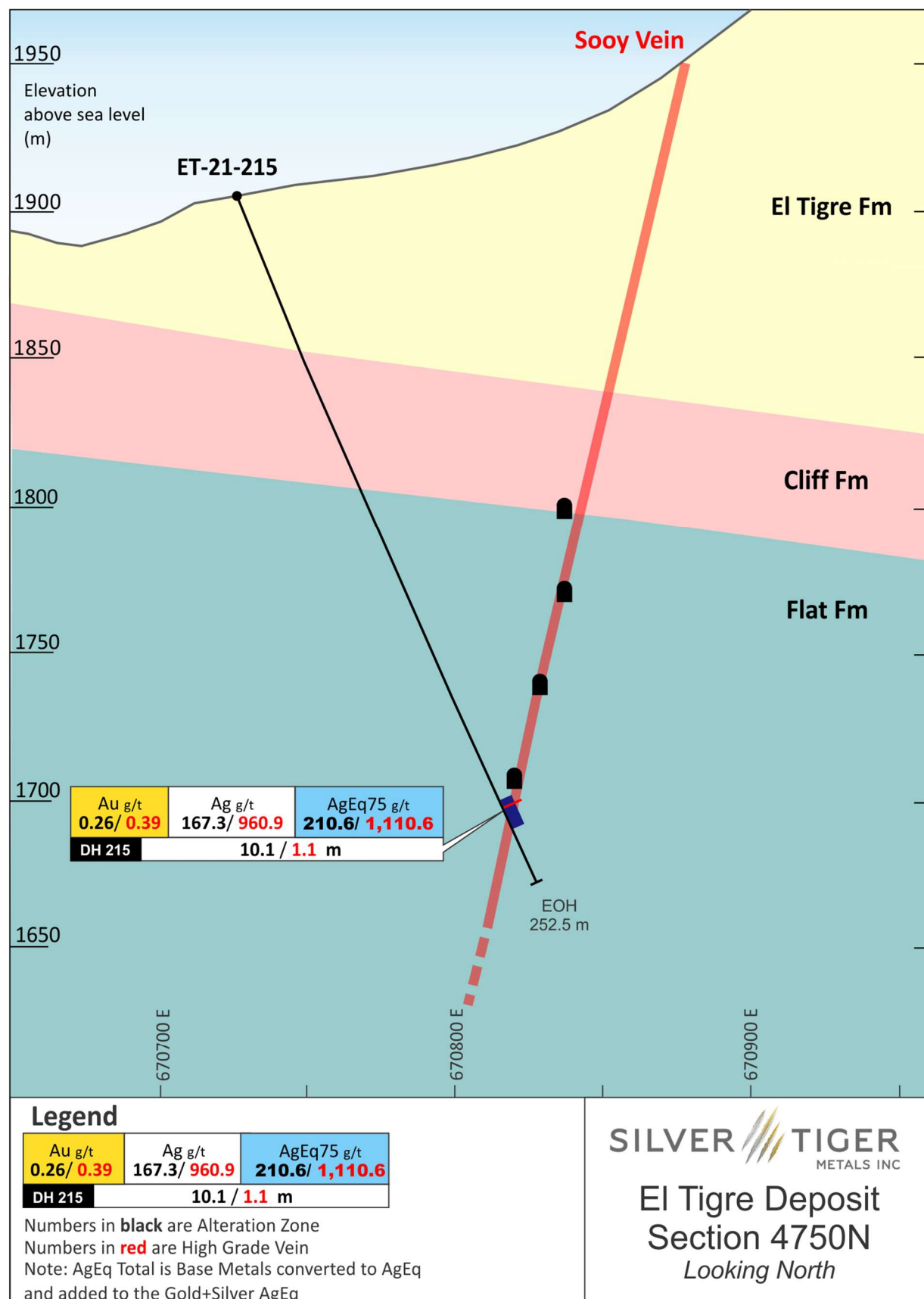
Numbers in **red** are High Grade Vein

Note: AgEq Total is Base Metals converted to AgEq
and added to the Gold+Silver AgEq

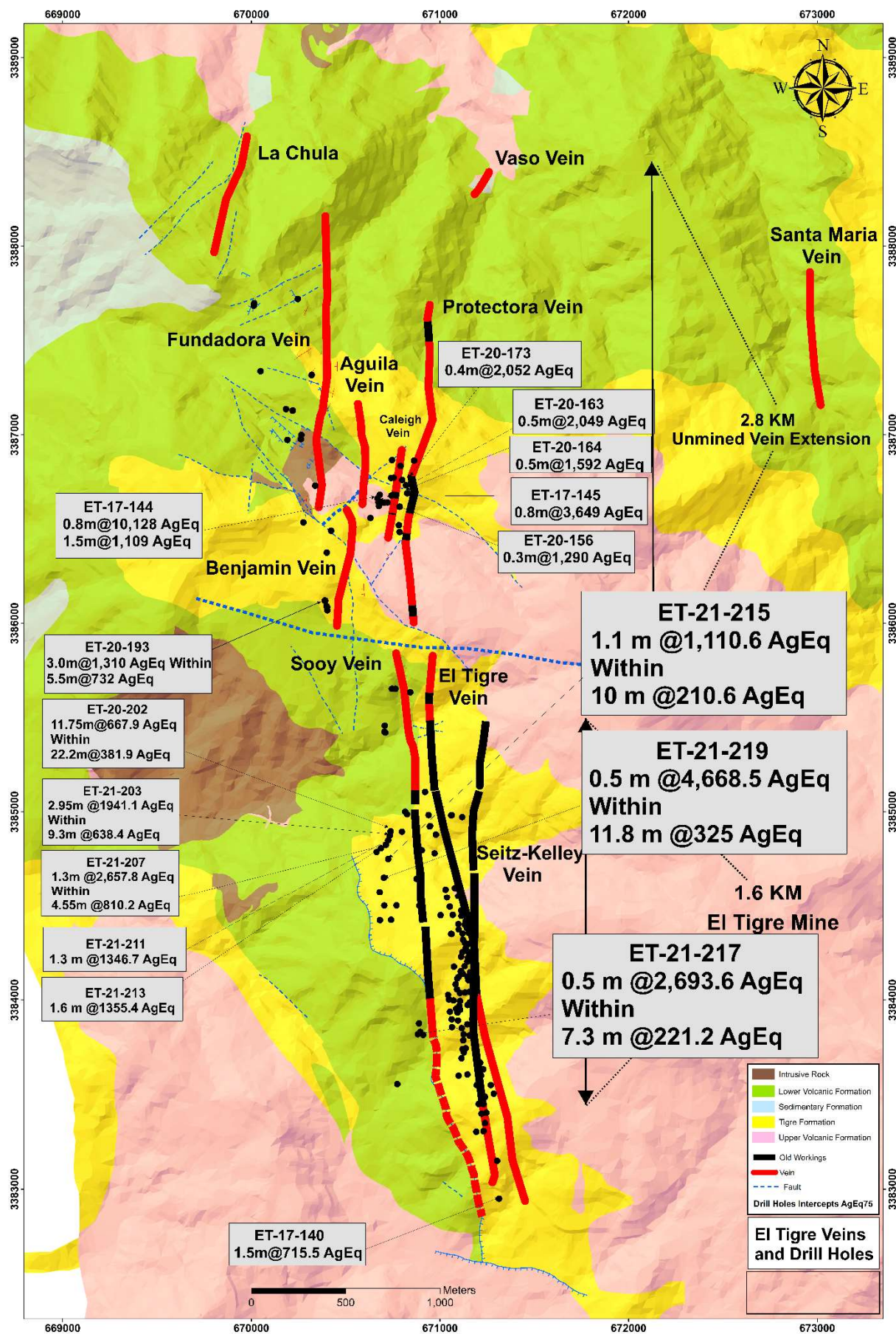
SILVER TIGER
METALS INC

El Tigre Deposit
Section 3875N
Looking North

El Tigre Cross Section 4750N



Plan Map of Five Kilometers of the El Tigre Veins and Drill Holes



El Tigre Resource Estimate

After acquiring El Tigre, Silver Tiger drilled 12,500 meters to define the wide halo of near surface gold mineralization around the mined high-grade veins of the historic El Tigre Mine. This allowed Silver Tiger to deliver a maiden resource estimate for the El Tigre Property to a depth of 150 meters containing indicated resources of 661,000 gold equivalent ounces at 0.77 g/t (21 g/t silver and 0.51 g/t gold) and inferred resources of 341,000 gold equivalent ounces at 1.59 g/t (88 g/t silver and 0.52 g/t gold). The National Instrument 43-101 Technical Report titled “NI 43-101 Technical Report and Updated Mineral Resource Estimate on the El Tigre Project, Sonora, México” effective as of September 7, 2017 and dated October 26, 2017 prepared by David Burga, P.Geo., Yungang Wu, P.Geo., Fred Brown, P.Geo., Jarita Barry, P.Geo., Eugene Puritch, P.Eng., FEC, CET, Alfred Hayden, P.Eng. and Richard H. Sutcliffe, Ph.D., P.Geo. of P&E Mining Consultants Inc. is available on the Corporation’s website at www.silvertigermetals.com and on www.sedar.com under the Corporation’s profile.

About the El Tigre Historic Mine District

Silver Tiger Metals Inc. is a Canadian company whose management has more than 25 years’ experience discovering, financing and building large hydrothermal silver projects in Mexico. Silver Tiger’s 100% owned 28,414 hectare Historic El Tigre Mining District is located in Sonora, Mexico. Principled environmental, social and governance practices are core priorities at Silver Tiger.

The El Tigre historic mine district is located in Sonora, Mexico and lies at the northern end of the Sierra Madre silver and gold belt which hosts many epithermal silver and gold deposits, including Dolores, Santa Elena and Las Chispas at the northern end. In 1896, gold was first discovered on the property in the Gold Hill area and mining started with the Brown Shaft in 1903. The focus soon changed to mining high-grade silver veins in the area with production coming from 3 parallel veins the El Tigre Vein, the Seitz Kelley Vein and the Sooy Vein. Underground mining on the middle El Tigre vein extended 1,450 meters along strike and was mined on 14 levels to a depth of approximately 450 meters. The Seitz Kelley Vein was mined along strike for 1 kilometer to a depth of approximately 200 meters. The Sooy Vein was only mined along strike for 250 meters to a depth of approximately 150 meters. Mining abruptly stopped on all 3 of these veins when the price of silver collapsed to less than 20¢ per ounce with the onset of the Great Depression. By the time the mine closed in 1930, it is reported to have produced a total of 353,000 ounces of gold and 67.4 million ounces of silver from 1.87 million tons (Craig, 2012). The average grade mined during this period was over 2 kilograms silver equivalent per ton.

The El Tigre silver and gold deposit is related to a series of high-grade epithermal veins controlled by a north-south trending structure cutting across the andesitic and rhyolitic tuffs of the Sierra Madre Volcanic Complex within a broad silver and gold mineralized propylitic alteration zone developed in the El Tigre Formation that can be up to 150 meters wide. The veins dip steeply to the west and are typically 0.5 meter wide but locally can be up to 5 meters in width. The veins, structures and mineralized zones outcrop on surface and have been traced for 5.3 kilometers along strike in our brownfield exploration area. Historical mining and exploration activities focused on a 1.5 kilometer portion of the southern end of the deposits, principally on the El Tigre, Seitz Kelly and Sooy veins. The under explored Caleigh, Benjamin, Protectora and the Fundadora exposed veins continue north for more than 3 kilometers. Silver Tiger has delivered its maiden 43-101 compliant resource estimate and is currently drilling to update its resource estimate and publish a PEA.

VRIFY Slide Deck and 3D Presentation – Silver Tiger’s El Tigre Project

VRIFY is a platform being used by companies to communicate with investors using 360° virtual tours of remote mining assets, 3D models and interactive presentations. VRIFY can be accessed by website and with the VRIFY iOS and Android apps.

Access the Silver Tiger Metals Inc. Company Profile on VRIFY at: <https://vrify.com>

The VRIFY Slide Deck and 3D Presentation for Silver Tiger Metals Inc. can be viewed at: <https://vrify.com/explore/decks/492> and on the Company's website at: www.silvertigermetals.com.

Procedure, Quality Assurance / Quality Control and Data Verification

The diamond drill core (HQ size) is geologically logged, photographed and marked for sampling. When the sample lengths are determined, the full core is sawn with a diamond blade core saw with one half of the core being bagged and tagged for assay. The remaining half portion is returned to the core trays for storage and/or for metallurgical test work.

The sealed and tagged sample bags are transported to the Bureau Veritas facility in Hermosillo, Mexico. Bureau Veritas crushes the samples (Code PRP70-250) and prepares 200-300 gram pulp samples with ninety percent passing Tyler 200 mesh (Code PUL85). The pulps are assayed for gold using a 30-gram charge by fire assay (Code FA630) and over limits greater than 10 grams per tonne are re-assayed using a gravimetric finish (Code FA530). Silver and multi-element analysis is completed using total digestion (Code MA200 Total Digestion ICP). Over limits greater than 100 grams per tonne silver are re-assayed using a gravimetric finish (Code FA530).

Quality assurance and quality control ("QA/QC") procedures monitor the chain-of-custody of the samples and includes the systematic insertion and monitoring of appropriate reference materials (certified standards, blanks and duplicates) into the sample strings. The results of the assaying of the QA/QC material included in each batch are tracked to ensure the integrity of the assay data. All results stated in this announcement have passed Silver Tiger's QA/QC protocols.

Qualified Person

David R. Duncan, P. Geo., V.P. Exploration of the Corporation, is the Qualified Person for Silver Tiger as defined under National Instrument 43-101. Mr. Duncan has reviewed and approved the scientific and technical information in this press release.

For further information, please contact:

Glenn Jessome
President and CEO
902 492 0298
jessome@silvertigermetals.com

CAUTIONARY STATEMENT:

Neither TSX Venture Exchange nor its Regulation Services Provider (as that term is defined in the policies of the TSX Venture Exchange) accepts responsibility for the adequacy or accuracy of this release.

This News Release includes certain "forward-looking statements". All statements other than statements of historical fact included in this release, including, without limitation, statements regarding potential mineralization, resources and reserves, the ability to convert inferred resources to indicated resources, the ability to complete future drilling programs and infill sampling, the ability to extend resource blocks, the similarity of mineralization at El Tigre to Delores, Santa Elena and Chispas, exploration results, and future plans and objectives of Silver Tiger, are forward-looking statements that involve various risks and uncertainties. Forward-looking statements are frequently characterized by words such as "may", "is expected to", "anticipates", "estimates", "intends", "plans", "projection", "could", "vision", "goals", "objective" and "outlook" and other similar words. Although Silver Tiger believes the expectations expressed in such forward-looking statements are based on reasonable assumptions, there can be no assurance that such statements will prove to be accurate and actual results and future events could differ materially from those anticipated in such statements. Important factors that could cause actual results to differ materially from Silver Tiger's expectations include risks and uncertainties related to exploration, development, operations, commodity prices and global financial volatility, risk and uncertainties of operating in a foreign jurisdiction as well as additional risks described from time to time in the filings made by Silver Tiger with securities regulators.