



## NEWS RELEASE

### **SILVER TIGER INTERSECTS 3,856.2 g/t AgEq OVER 0.5 METERS WITHIN A BROADER INTERVAL OF 7.5 METERS GRADING 491.1 g/t AgEq IN THE SOOY VEIN**

**HALIFAX, NOVA SCOTIA – October 19, 2021** – Silver Tiger Metals Inc. (TSXV:SLVR and OTCQX:SLVTF) ("Silver Tiger" or the "Corporation") has intersected **3,856.2 g/t silver equivalent over 0.5 meters** in the Sooy Vein in Drill Hole ET-21-244 from 251.0 meters to 251.5 meters within a broader mineralized interval of **7.5 meters grading 491.1 g/t silver equivalent** from 244.0 meters to 251.5 meters.

Drill hole ET-21-244 also intersected the Sooy Footwall Zone returning **0.5 meters grading 2,132.6 g/t silver equivalent** from 274.3 meters to 274.8 meters within a broader mineralized interval of **1.8 meters grading 624.5 g/t silver equivalent** from 273.0 meters to 274.8 meters

Highlights from the on-going drilling program targeting the Sooy Vein and the Benjamin Vein (northern Sooy extension) include the following:

- Hole ET 21-244 (Sooy Vein): **0.5 meters grading 3,856.2 g/t silver equivalent** from 251.0 meters to 251.5 meters, consisting of 3,531.0 g/t silver, 1.30 g/t gold, 1.06% copper, 3.64% lead and 1.18% zinc, **within 7.5 meters grading 491.1 g/t silver equivalent** from 244.0 meters to 251.5 meters, consisting of 454.8 g/t silver, 0.16 g/t gold, 0.12% copper, 0.33% lead and 0.16% zinc.
- Hole ET-21-244 (Sooy Vein Footwall): **0.5 meters grading 2,132.6 g/t silver equivalent** from 274.3 meters to 274.8 meters consisting of 2,030.0 g/t silver, 0.40 g/t gold, 0.46% copper, 0.99% lead and 0.16% zinc, **within 1.8 meters grading 624.5 g/t silver equivalent** from 273.0 meters to 274.8 meters consisting of 593.4 g/t silver, 0.13 g/t gold, 0.13% copper, 0.28% lead and 0.06% zinc.
- Hole ET-21-243 (Benjamin Vein): **0.5 meters grading 965.3 g/t silver equivalent** from 78.8 meters to 79.3 meters consisting of 864.0 g/t silver, 0.05 g/t gold, 0.54% copper, 0.52% lead and 1.00% zinc, **within 4.3 meters grading 155.0 g/t silver equivalent** from 75.5 meters to 79.8 meters consisting of 138.5 g/t silver, 0.02 g/t gold, 0.07% copper, 0.13% lead and 0.14% zinc.

Additional results are presented in the Drill Hole Results table below along with the details for the calculation of the silver equivalent grades.

A Plan Map of the El Tigre Veins and Drill Holes is attached. Also attached is El Tigre Cross Section 4000N detailing Drill Hole ET-21-244 and El Tigre Cross Section 6025N detailing Drill Hole ET-21-243. A Plan Map of the 600 meter central portion of the Sooy Vein is also attached.

Silver Tiger's CEO, Glenn Jessome, stated, "Our decision to focus our drilling along kilometers of the Sooy Vein, that had limited historical mining, is advancing the El Tigre District very quickly. Step-out drill Hole 244 on the Sooy Vein is located approximately 1.1 kilometers to the south of Discovery Hole 202 and step-out drill Hole 243 is located approximately 1.1 kilometers to the north of Discovery Hole 202. The next step in advancing the El Tigre District is the drilling that we have begun on the Seitz Kelly Vein, which also had limited historical mining."

### Drill Hole Results Table

[illegible]

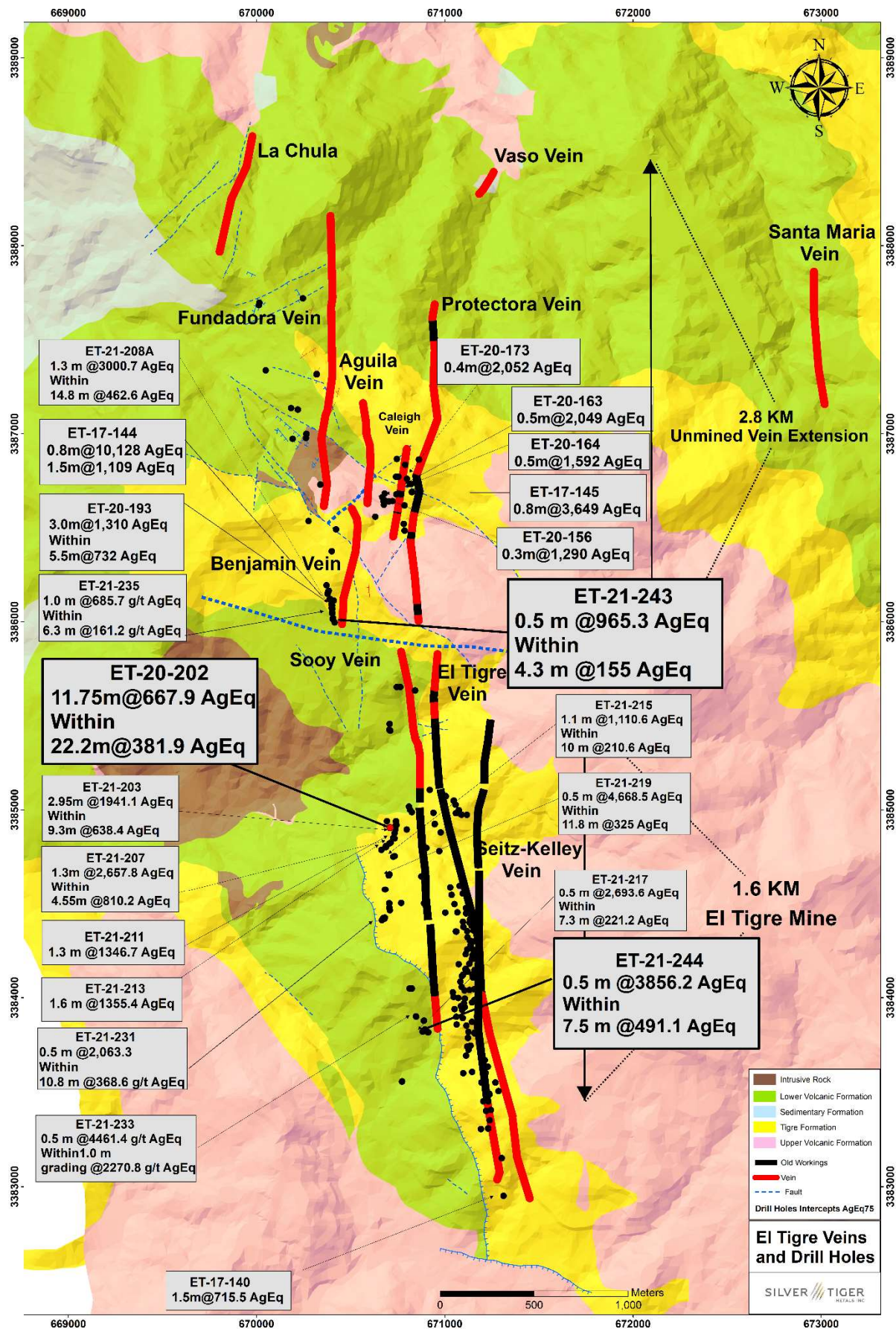
<b>ET-21-256</b>		230.1	230.9	0.8	0.20	88.5	0.00	0.04	0.16	<b>110.0</b>
	<i>Sooy Vein</i>	249.7	253.5	3.8	0.05	81.2	0.01	0.03	0.17	<b>92.5</b>
	including	251.9	252.4	0.5	0.22	493.0	0.07	0.22	1.06	<b>556.2</b>
		271.9	284.0	12.1	0.05	38.4	0.01	0.03	0.06	<b>45.5</b>
		275.9	284.0	8.1	0.05	48.8	0.01	0.04	0.07	<b>56.9</b>
	<i>El Tigre Vein</i>	403.1	409.0	5.9	0.04	124.8	0.04	0.12	0.59	<b>154.4</b>
	including	403.1	403.6	0.5	0.10	984.0	0.22	0.32	1.76	<b>1,078.2</b>
	including	408.0	409.0	1.0	0.10	201.5	0.15	0.54	2.48	<b>318.3</b>
<b>ET-21-259</b>		129.0	134.4	5.4	0.02	31.1	0.05	0.33	0.29	<b>55.0</b>
	<i>Sooy Vein</i>	142.4	146.4	4.0	0.02	19.8	0.00	1.28	1.08	<b>88.3</b>
	including	145.7	146.4	0.7	0.10	101.0	0.00	7.41	4.97	<b>448.9</b>

- Notes:
1. Not true width.
  2. Silver Equivalent (“EqAg”) ratios are based on a silver to gold price ratio of 75:1 (Au:Ag). Copper, lead and zinc are converted using \$3.66/lb copper, \$0.90/lb lead, \$1.26/lb zinc at 100% metal recoveries based on a silver price of \$26.00/oz.
  3. Excludes 1.5 meters of mining void.
- \* Mining void.

### Drill Hole Location Table

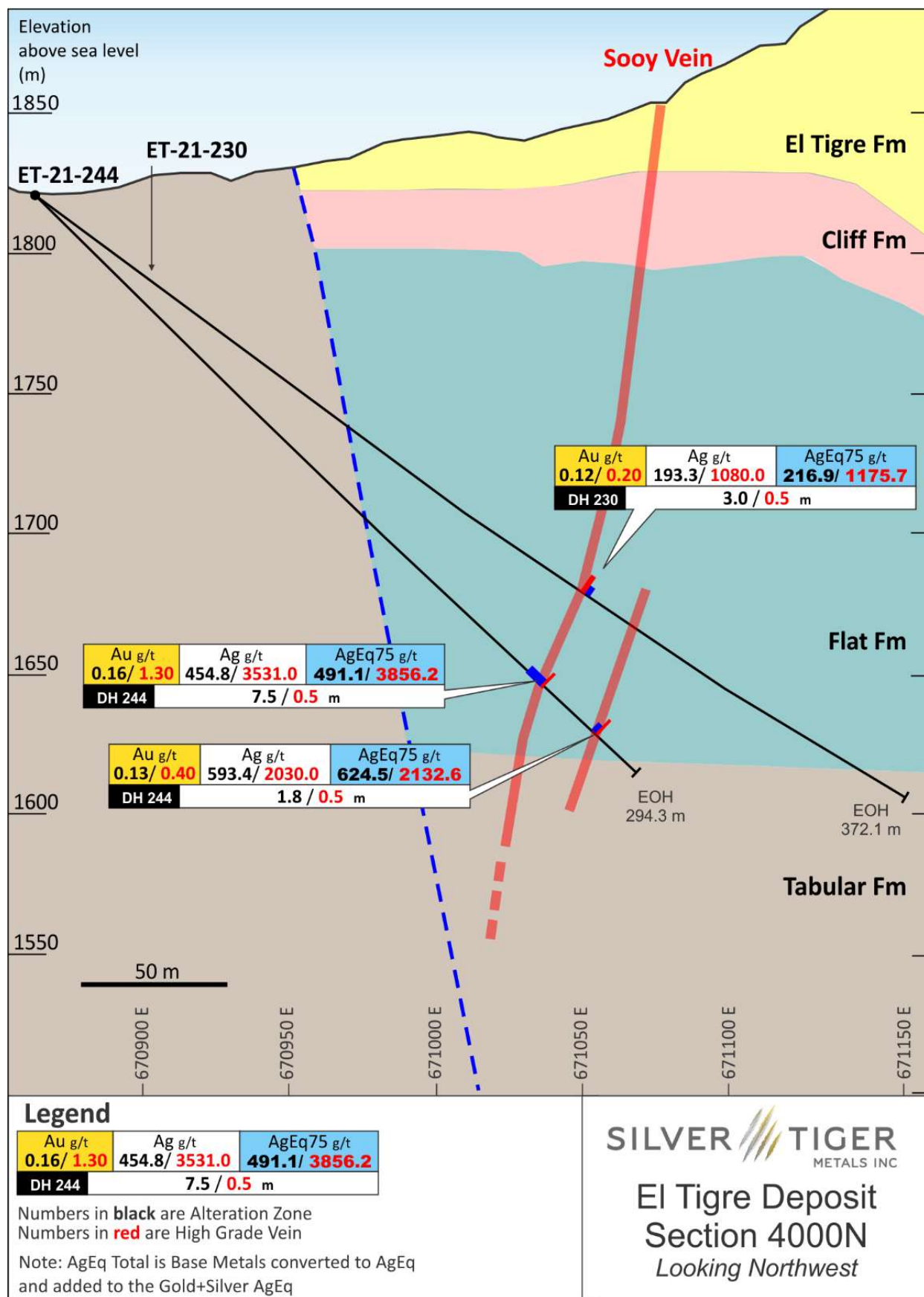
Hole ID	Section	Easting	Northing	Elevation	Az	Dip	Length
ET-21-243	6012.5N	670404.8	3386015	1906.486	90	-40	216.55
ET-21-244	3825N	670885.9	3383824	1821.455	60	-45	294.3
ET-21-249	3875N	670889.843	3383877.317	1822.51	90	-25	440.7
ET-21-252	6125N	670410.6	3386113	1937.172	90	-35	183.0
ET-21-253	4450N	670708.6	3384462	1944.909	90	-57	427.0
ET-21-255	6150N	670666.5	3384409	1964.206	90	-45	448.35
ET-21-256	4400N	670813.1	3384048	1877.801	90	-30	399.55
ET-21-259	6150N	670377.45	3386149.218	1941.747	90	-55	210.45

# Plan Map of the El Tigre Veins and Drill Holes

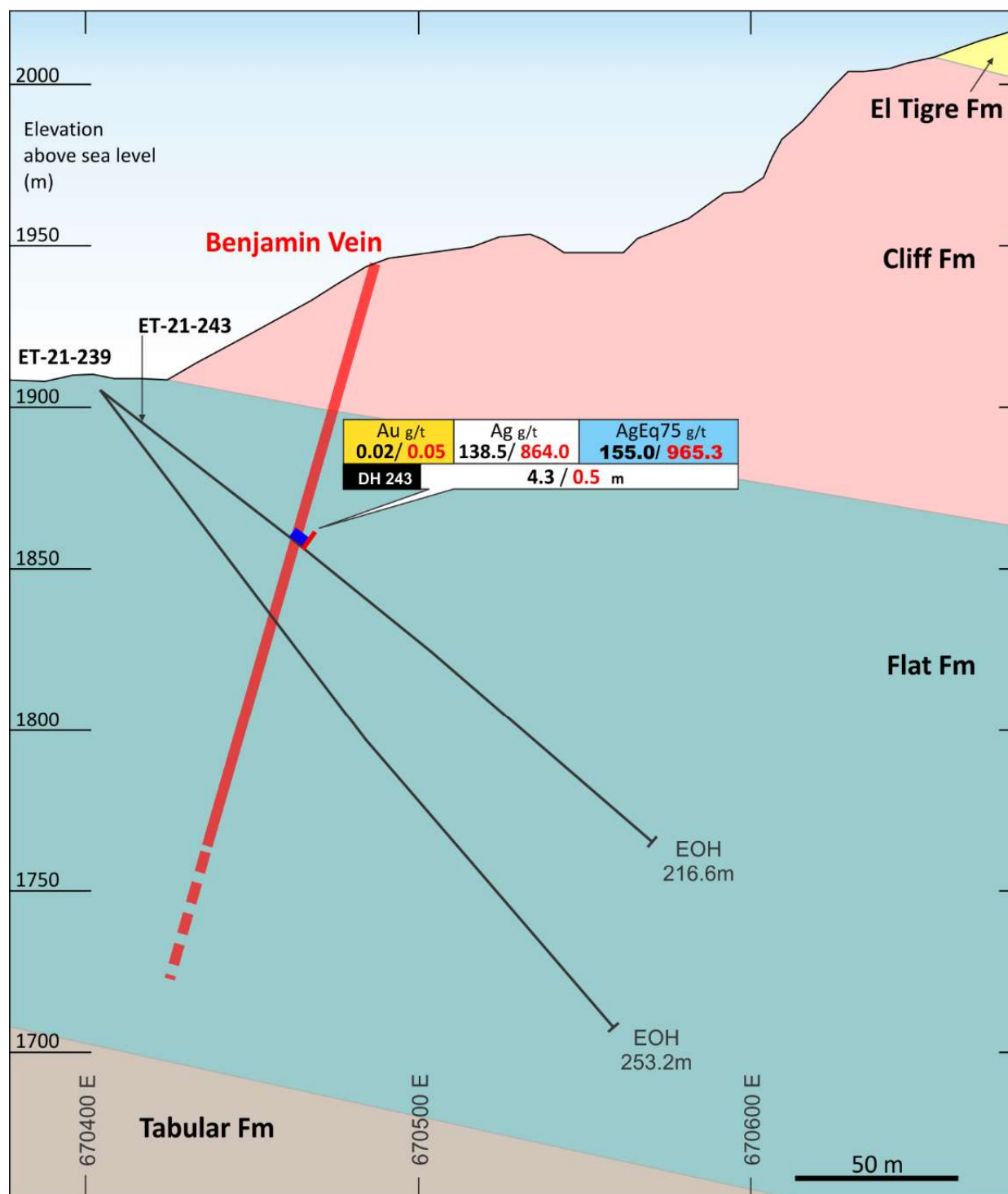




# El Tigre Cross Section 4000N (Drill Hole ET-21-244)



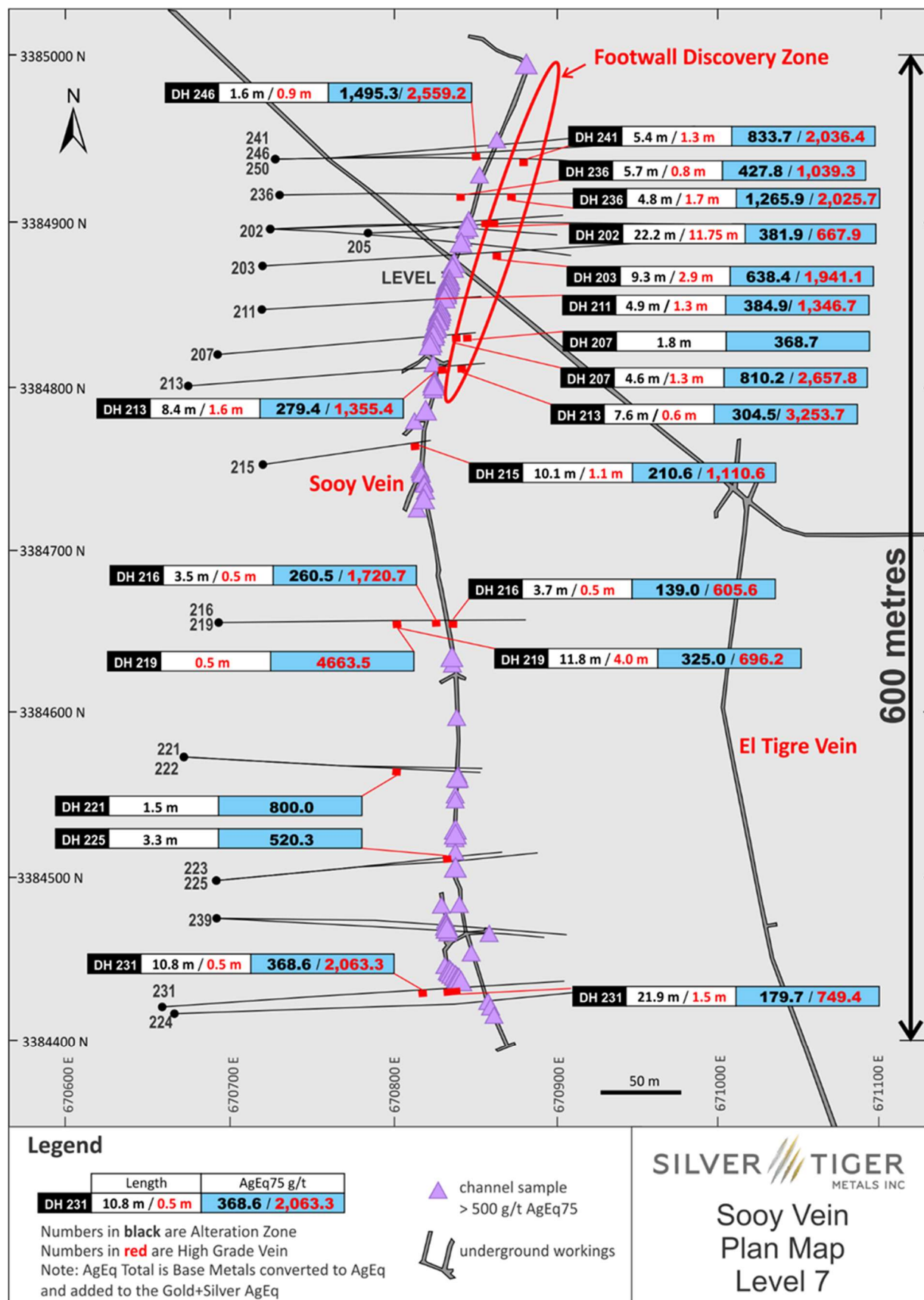
# El Tigre Cross Section 6025N (Drill Hole ET-21-243)



**SILVER TIGER**  
METALS INC

**El Tigre Deposit**  
**Section 6025N**  
*Looking North*

# Plan Map of 600 Meters of the Sooy Vein



## **El Tigre Resource Estimate**

After acquiring El Tigre, Silver Tiger drilled 12,500 meters to define the wide halo of near surface gold mineralization around the mined high-grade veins of the historic El Tigre Mine. This allowed Silver Tiger to deliver a maiden resource estimate for the El Tigre Property to a depth of 150 meters containing indicated resources of 661,000 gold equivalent ounces at 0.77 g/t (21 g/t silver and 0.51 g/t gold) and inferred resources of 341,000 gold equivalent ounces at 1.59 g/t (88 g/t silver and 0.52 g/t gold). The National Instrument 43-101 Technical Report titled “NI 43-101 Technical Report and Updated Mineral Resource Estimate on the El Tigre Project, Sonora, México” effective as of September 7, 2017 and dated October 26, 2017 prepared by David Burga, P.Geo., Yungang Wu, P.Geo., Fred Brown, P.Geo., Jarita Barry, P.Geo., Eugene Puritch, P.Eng., FEC, CET, Alfred Hayden, P.Eng. and Richard H. Sutcliffe, Ph.D., P.Geo. of P&E Mining Consultants Inc. is available on the Corporation’s website at [www.silvertigermetals.com](http://www.silvertigermetals.com) and on [www.sedar.com](http://www.sedar.com) under the Corporation’s profile.

## **About the El Tigre Historic Mine District**

Silver Tiger Metals Inc. is a Canadian company whose management has more than 25 years’ experience discovering, financing and building large hydrothermal silver projects in Mexico. Silver Tiger’s 100% owned 28,414 hectare Historic El Tigre Mining District is located in Sonora, Mexico. Principled environmental, social and governance practices are core priorities at Silver Tiger.

The El Tigre historic mine district is located in Sonora, Mexico and lies at the northern end of the Sierra Madre silver and gold belt which hosts many epithermal silver and gold deposits, including Dolores, Santa Elena and Las Chispas at the northern end. In 1896, gold was first discovered on the property in the Gold Hill area and mining started with the Brown Shaft in 1903. The focus soon changed to mining high-grade silver veins in the area with production coming from 3 parallel veins the El Tigre Vein, the Seitz Kelley Vein and the Sooy Vein. Underground mining on the middle El Tigre vein extended 1,450 meters along strike and was mined on 14 levels to a depth of approximately 450 meters. The Seitz Kelley Vein was mined along strike for 1 kilometer to a depth of approximately 200 meters. The Sooy Vein was only mined along strike for 250 meters to a depth of approximately 150 meters. Mining abruptly stopped on all 3 of these veins when the price of silver collapsed to less than 20¢ per ounce with the onset of the Great Depression. By the time the mine closed in 1930, it is reported to have produced a total of 353,000 ounces of gold and 67.4 million ounces of silver from 1.87 million tons (Craig, 2012). The average grade mined during this period was over 2 kilograms silver equivalent per ton.

The El Tigre silver and gold deposit is related to a series of high-grade epithermal veins controlled by a north-south trending structure cutting across the andesitic and rhyolitic tuffs of the Sierra Madre Volcanic Complex within a broad silver and gold mineralized propylitic alteration zone developed in the El Tigre Formation that can be up to 150 meters wide. The veins dip steeply to the west and are typically 0.5 meter wide but locally can be up to 5 meters in width. The veins, structures and mineralized zones outcrop on surface and have been traced for 5.3 kilometers along strike in our brownfield exploration area. Historical mining and exploration activities focused on a 1.6 kilometer portion of the southern end of the deposits, principally on the El Tigre, Seitz Kelly and Sooy veins. The under explored Caleigh, Benjamin, Protectora and the Fundadora exposed veins continue north for more than 3 kilometers. Silver Tiger has delivered its maiden 43-101 compliant resource estimate and is currently drilling to update its resource estimate and publish a PEA.

## **VRIFY Slide Deck and 3D Presentation – Silver Tiger’s El Tigre Project**

VRIFY is a platform being used by companies to communicate with investors using 360° virtual tours of remote mining assets, 3D models and interactive presentations. VRIFY can be accessed by website and with the VRIFY iOS and Android apps.

Access the Silver Tiger Metals Inc. Company Profile on VRIFY at: <https://vrify.com>



The VRIFY Slide Deck and 3D Presentation for Silver Tiger Metals Inc. can be viewed at: <https://vrify.com/explore/decks/492> and on the Corporation's website at: [www.silvertigermetals.com](http://www.silvertigermetals.com).

## **Procedure, Quality Assurance / Quality Control and Data Verification**

The diamond drill core (HQ size) is geologically logged, photographed and marked for sampling. When the sample lengths are determined, the full core is sawn with a diamond blade core saw with one half of the core being bagged and tagged for assay. The remaining half portion is returned to the core trays for storage and/or for metallurgical test work.

The sealed and tagged sample bags are transported to the Bureau Veritas facility in Hermosillo, Mexico. Bureau Veritas crushes the samples (Code PRP70-250) and prepares 200-300 gram pulp samples with ninety percent passing Tyler 200 mesh (Code PUL85). The pulps are assayed for gold using a 30-gram charge by fire assay (Code FA630) and over limits greater than 10 grams per tonne are re-assayed using a gravimetric finish (Code FA530). Silver and multi-element analysis is completed using total digestion (Code MA200 Total Digestion ICP). Over limits greater than 100 grams per tonne silver are re-assayed using a gravimetric finish (Code FA530).

Quality assurance and quality control ("QA/QC") procedures monitor the chain-of-custody of the samples and includes the systematic insertion and monitoring of appropriate reference materials (certified standards, blanks and duplicates) into the sample strings. The results of the assaying of the QA/QC material included in each batch are tracked to ensure the integrity of the assay data. All results stated in this announcement have passed Silver Tiger's QA/QC protocols.

## **Qualified Person**

David R. Duncan, P. Geo., V.P. Exploration of the Corporation, is the Qualified Person for Silver Tiger as defined under National Instrument 43-101. Mr. Duncan has reviewed and approved the scientific and technical information in this press release.

## **For further information, please contact:**

Glenn Jessome  
President and CEO  
902 492 0298  
[jessome@silvertigermetals.com](mailto:jessome@silvertigermetals.com)

## **CAUTIONARY STATEMENT:**

*Neither TSX Venture Exchange nor its Regulation Services Provider (as that term is defined in the policies of the TSX Venture Exchange) accepts responsibility for the adequacy or accuracy of this release.*

*This News Release includes certain "forward-looking statements". All statements other than statements of historical fact included in this release, including, without limitation, statements regarding potential mineralization, resources and reserves, the ability to convert inferred resources to indicated resources, the ability to complete future drilling programs and infill sampling, the ability to extend resource blocks, the similarity of mineralization at El Tigre to Delores, Santa Elena and Chispas, exploration results, and future plans and objectives of Silver Tiger, are forward-looking statements that involve various risks and uncertainties. Forward-looking statements are frequently characterized by words such as "may", "is expected to", "anticipates", "estimates", "intends", "plans", "projection", "could", "vision", "goals", "objective" and "outlook" and other similar words. Although Silver Tiger believes the expectations expressed in such forward-looking statements are based on reasonable assumptions, there can be no assurance that such statements will prove to be accurate and actual results and future events could differ materially from those anticipated in such statements. Important factors that could cause actual results to differ materially from Silver Tiger's expectations include risks and uncertainties related to exploration, development, operations, commodity prices and global financial volatility, risk and uncertainties of operating in a foreign jurisdiction as well as additional risks described from time to time in the filings made by Silver Tiger with securities regulators.*